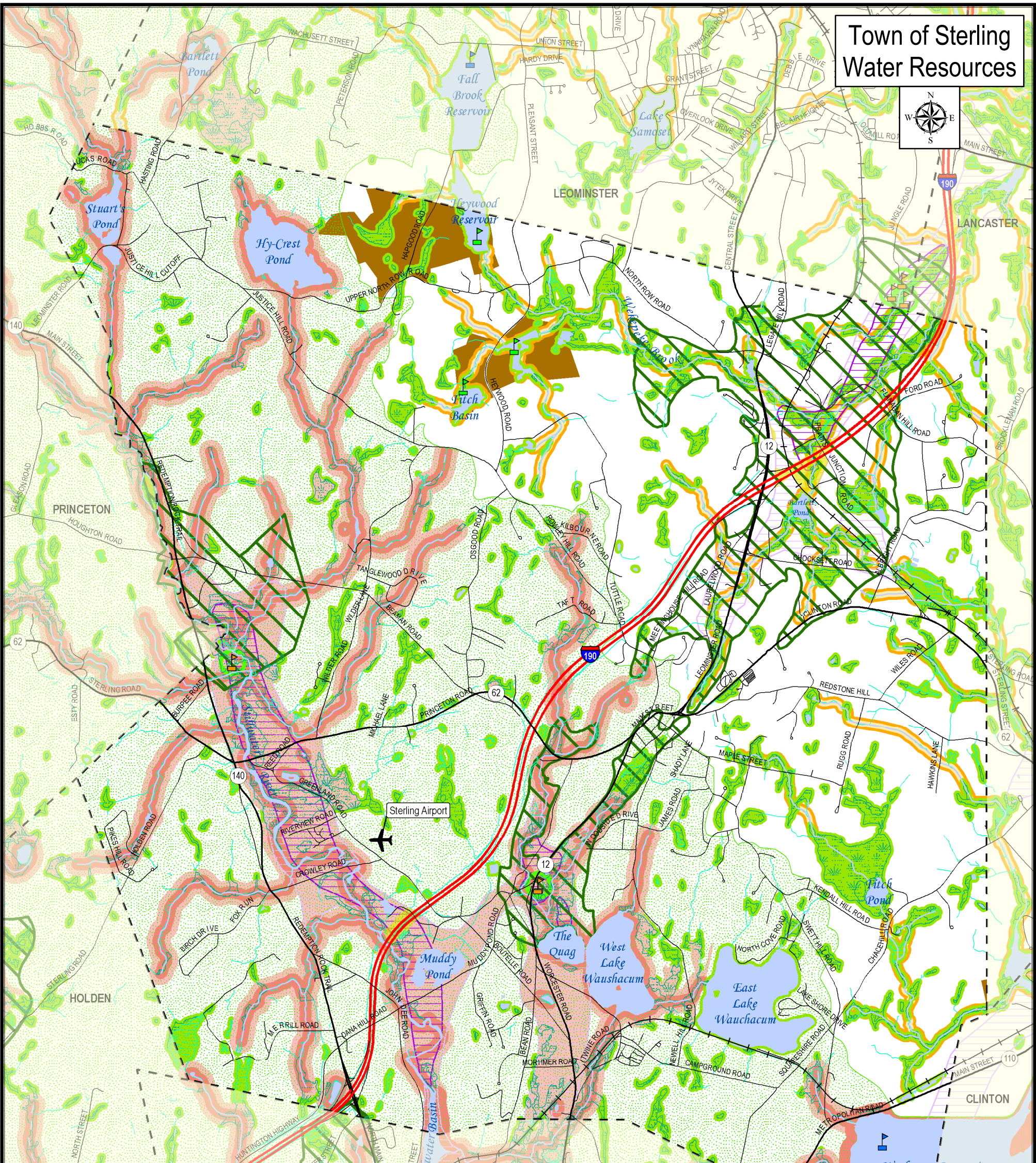


# Town of Sterling Water Resources



## Legend

- |                           |   |  |
|---------------------------|---|--|
| Airports                  | Sterling Performance Zone I (Zoning District)                             | <b>Aquifers</b>                                    |
| Community Boundaries      | DEP Zone I  | High Yield (>300 gallons per minute)               |
| <b>Roadways</b>           | DEP Zone II   | Medium Yield (100-300 gallons per minute)          |
| Interstate Routes         | DEP Outstanding Resource Waters   | <b>Watershed Protection Act (WsPA, Cohen Bill)</b> |
| US & State Routes         | DEP Non-Potential Drinking Water Source Area                              | Primary WsPA Protection Area                       |
| Other Roads               | <b>Public Water Supplies</b>  | Secondary WsPA Protection Area                     |
| <b>RailLines</b>          | Sterling Groundwater Well   | <b>Wetlands Protection Act Buffer (WPA)</b>        |
| Active RailLines          | Regional Surface Water Source   | Note: WPA data overlayed by WsPA data              |
| <b>Water</b>              | Clinton Surface Water Source (Inactive)                                   | 100' - WPA Buffer                                  |
| Streams & Rivers          | Town of Clinton-Inactive Public Water Supply ("Wekepeke Watershed Lands") | <b>River Protection Act Buffers (RPA)</b>          |
| Intermittent Stream       |   | Note: RPA data overlayed by WsPA & WPA data        |
| Lakes, Ponds & Reservoirs |   | 100' - Absolute                                    |
| <b>Wetlands</b>           |   | 200' - Town Discretion                             |
| Hydrologic Connection     |   |  |
| Marsh/Bog                 |   |  |
| Wooded marsh              |   |  |

Mapping efforts coordinated by the Town of Sterling Open Space Implementation Committee (sterling.openspace@gmail.com)

**DATA SOURCES:** MassGIS, MHD, WsPA, WPA, RPA and the MRPC.  
**DISCLAIMER:** The information depicted on this map is for planning purposes only. All data are representational and are not adequate for boundary definition, regulatory interpretation, or parcel-based analysis.

PREPARED BY:  
Montachusett Regional Planning Commission  
GIS Department, June 2008  
R1427 Water Street  
Fitchburg, MA 01420  
Phone: 978-345-7376  
E-mail: mrpc@mrpc.org

