

# Town of Sterling Department of Public Works Facility

Dull Men's Club

April 11, 2024

Sterling Senior Center

Ryan S. Mouradian, P.E. DPW Superintendent

# Overview

- Review existing facility
- What are the goals?
- What have we done?
- What are the next steps?



# The Existing Facility

- Located at 171 Worcester Road (Route 12), across from the Pandolf Perkins gravel pit
- 3.7 acre parcel
- The initial building is believed to have been built in 1958
- Building additions were installed in 1972, 1980, and 2008



Worcester Rd

12

Worcester

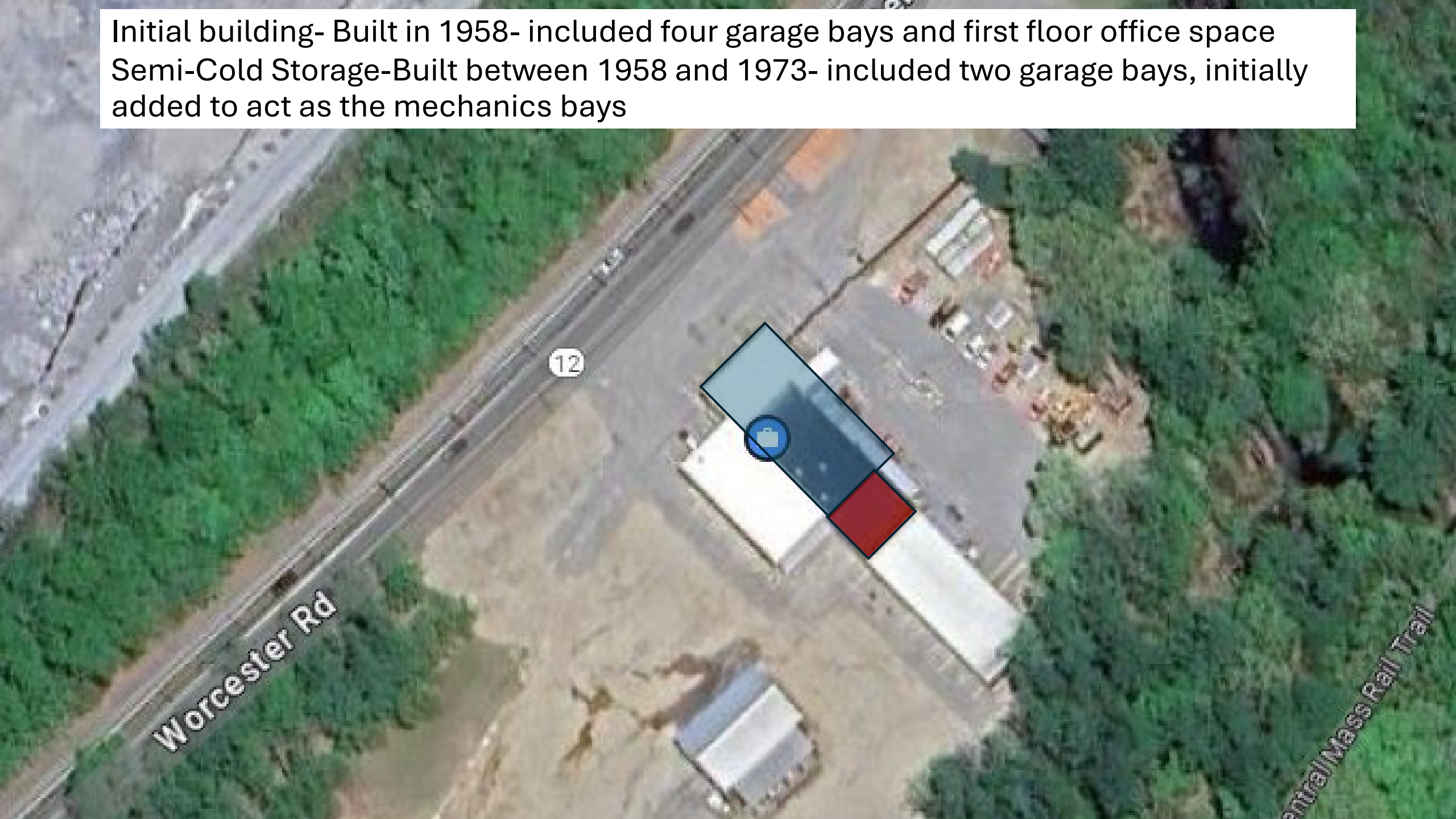
Central Mass Rail Trail

Initial building- Built in 1958- included four garage bays and first floor office space





Initial building- Built in 1958- included four garage bays and first floor office space  
Semi-Cold Storage-Built between 1958 and 1973- included two garage bays, initially added to act as the mechanics bays



Initial building- Built in 1958- included four garage bays and first floor office space  
Semi-Cold Storage-Built between 1958 and 1973- included two garage bays, initially added to act as the mechanics bays  
Cold Storage-Built in 1978- 40'x98' unheated steel building with one drive through bay, and two additional bays



Initial building- Built in 1958- included four garage bays and first floor office space  
Semi-Cold Storage-Built between 1958 and 1973- included two garage bays, initially added to act as the mechanics bays  
Cold Storage-Built in 1978- 40'x98' unheated steel building with one drive through bay, and two additional bays  
2008 addition- added four additional bays Infront of original four bays, renovated existing office spaces, added second floor above office spaces for meeting room and locker room







Septic  
System

12

Salt  
Shed  
with  
Lean-To

Quonset  
-Hut

Fuel  
Pumps

Worcester Rd

Worcester

Central Mass Rail Trail









OFFICE  
→

WARNING  
No Entry  
No Parking  
No Stopping

















































# What are the goals?

- Provide a safe efficient facility for the Sterling DPW employees
- Provide the proper protection for the multi-million dollar fleet of vehicles and equipment
- Provide adequate covered salt storage
- Provide updated town-wide fuel storage and dispensing systems
- Provide an efficient and environmentally responsible site layout that allows for room to grow or adjust operations as necessary
- Provide a project that is palatable to the Sterling taxpayers

# What have we done?

- In 2021 the Town hired Weston & Sampson Engineers, who have a division dedicated to the design of municipal public works facilities
- They reviewed the entire existing building, including the various systems, condition of the spaces and the exterior appurtenances (fuel island, salt shed, quonset hut etc.)
- They interviewed numerous employees at the DPW about the functionality of the existing building as well as some “wish list” items
- They analyzed the workforce numbers and necessary number of offices
- They reviewed the fleet, and analyzed interior, covered or exterior storage, as well as the size of the vehicle.



# What have we done? (cont.)

- All of this information was compiled into a “space needs summary” which looks at the square footage necessary to operate the DPW safely and efficiently.
  - Existing facility: approximately 15,000 square feet
  - Recommendation based on space needs summary: 38,000 square feet
- Very preliminary conceptual designs were created



EXISTING SITE OVERVIEW  
1" = 40'-0"

#### PROPOSED PROGRAM LEGEND:

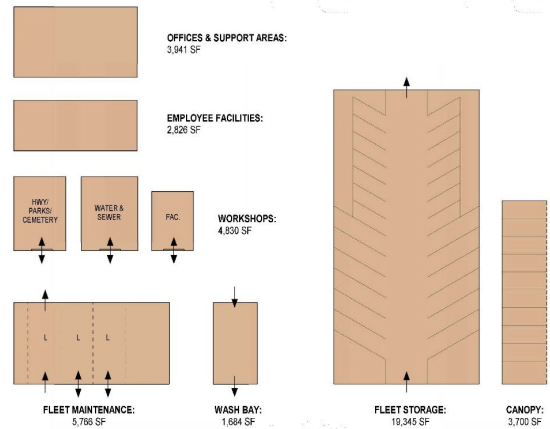
OFFICES & OFFICE SUPPORT AREAS	3,941 SF
EMPLOYEE FACILITIES	2,826 SF
WORKSHOPS	4,830 SF
FLEET MAINTENANCE	5,766 SF
WASH BAY	1,684 SF
FLEET STORAGE	19,345 SF

DPW BUILDING TOTAL = 38,393 SF

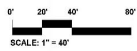
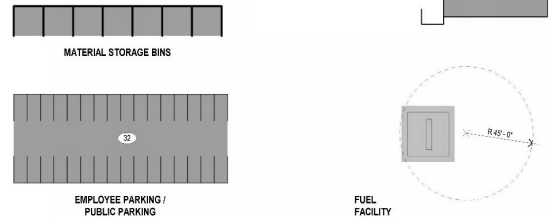
CANOPY STORAGE = 3,700 SF

#### SUMMARY OF PROPOSED DPW PROGRAM / SITE AMENITIES:

##### BUILDING COMPONENTS:



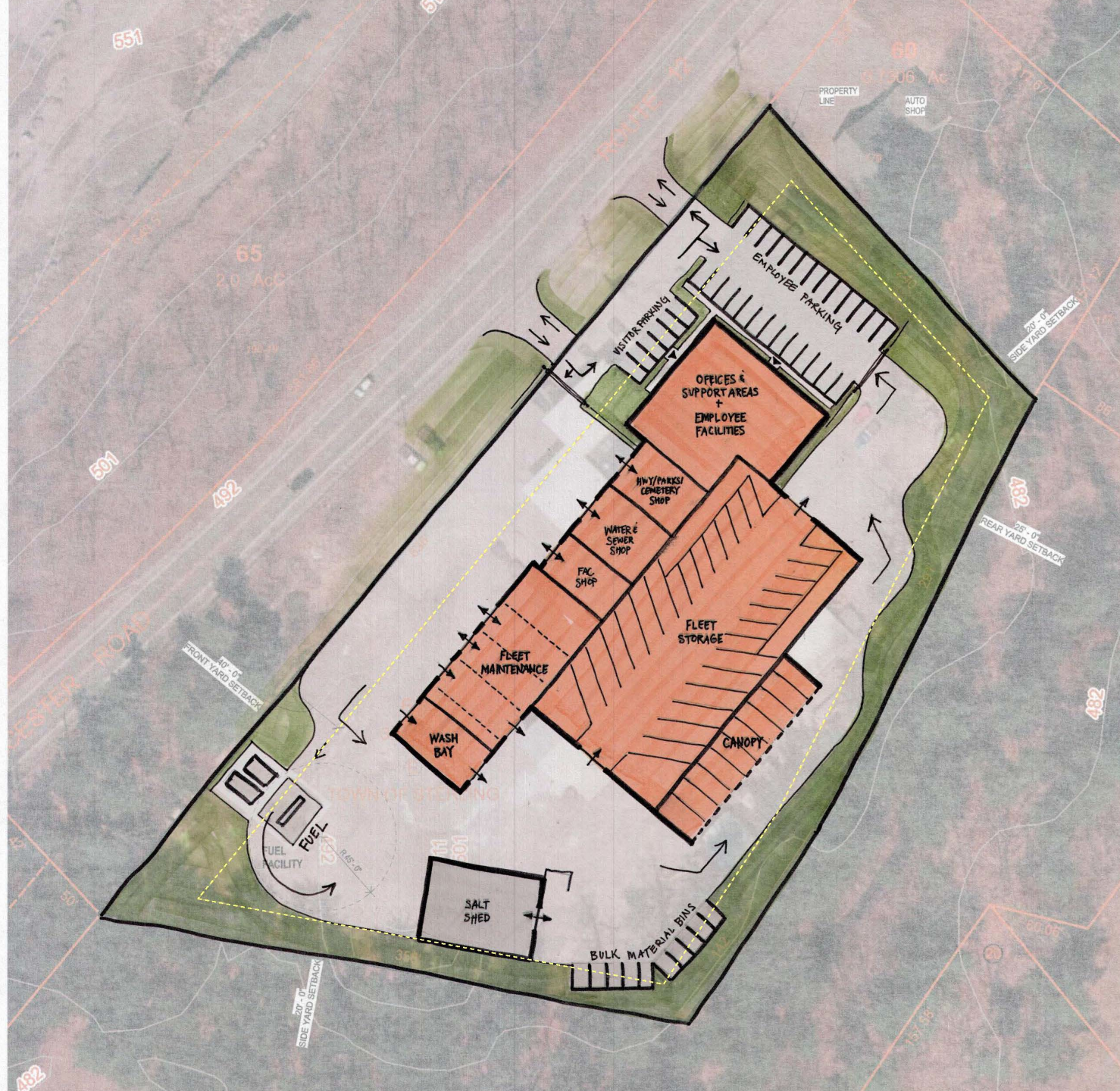
##### SITE COMPONENTS:



#### EXISTING SITE & PROGRAM OVERVIEW

NEW DPW FACILITY  
171 WORCESTER ROAD  
STERLING, MA 01564

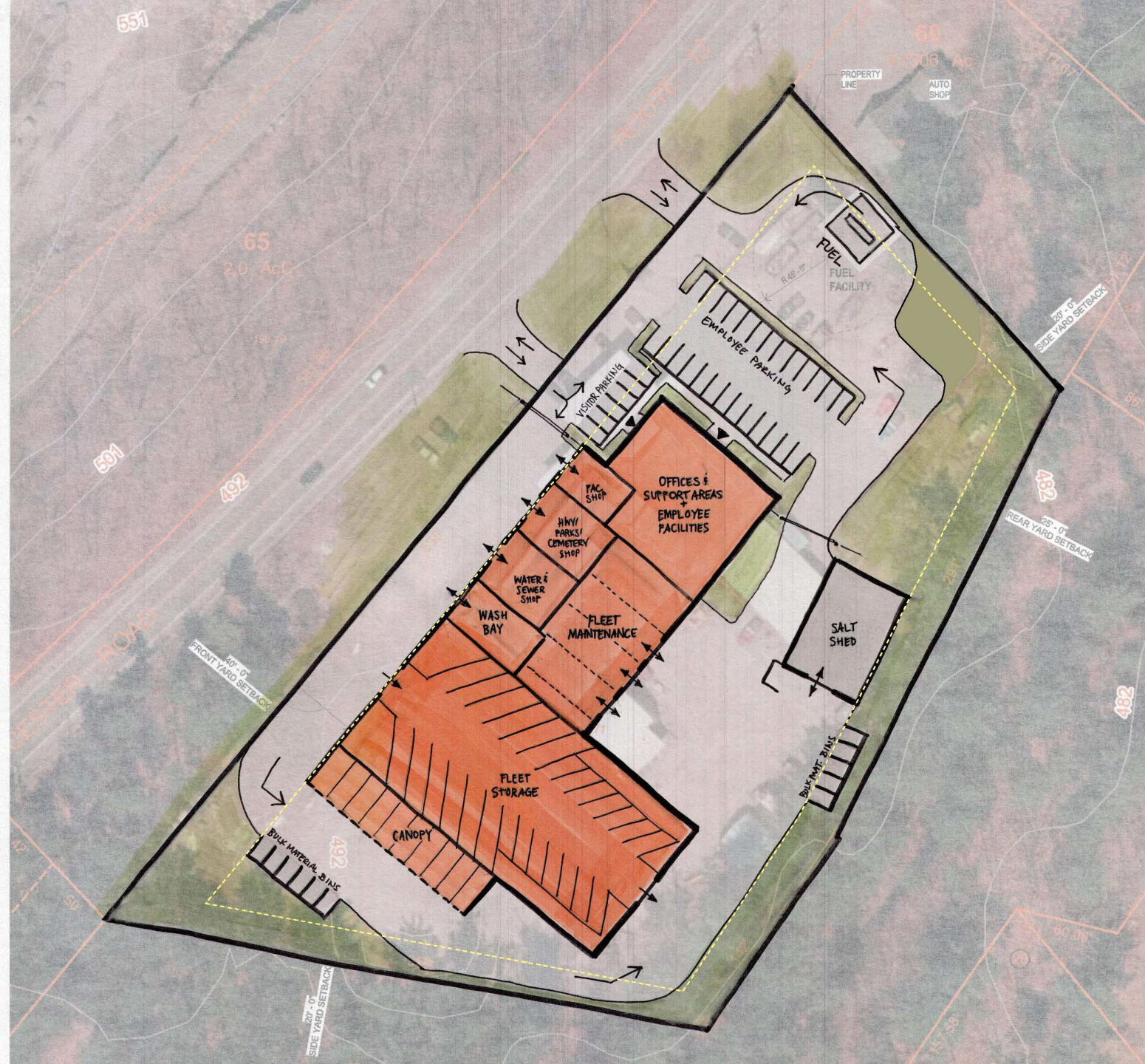
















ALT. SITE - OVERVIEW  
1" = 160'-0"



ALT. SITE - LAYOUT 1  
1" = 60'-0"







# What are the next steps?

- At the request of the Department of Public Works Board, the Select Board created the DPW Facility Committee at their March 13, 2024 meeting.
- The committee will be made up of five voting members, one from the DPW Board, one from the Select Board, one from the Finance Committee and two members of the public.
- We have been receiving applications from the public using the town's volunteer application available online
- The DPW Board will be reviewing these applications, and inviting applicants in for interviews before making a recommendation to the Select Board.



# What are the next steps? (cont.)

- When the board members are appointed by the Select Board, they will meet regularly and be responsible for making recommendations as to what to do with the DPW Facility.
  - Renovation vs. new build?
  - Existing location?
  - New location?
  - Size?
  - etc



# Questions?