



Route 140 at Route 62 Intersection Improvements Project

March 28, 2023

Presented by





Overview

- Existing Conditions
- Alternatives / Preferred Alternatives
- Proposed Conditions
- Turning Movements
- Questions



Existing Conditions





Existing Conditions

- Poor sight distances looking from Route 62 north and south on Route 140
- Trucks have been known to speed along Route 140 through this intersection (posted speed limit is 35 mph)
- High crash rate – double the state average
- No existing bicycle or pedestrian facilities
- One lane approach for each direction, with slip lane for eastbound left-turns and southbound right-turns
- Intersection operating with Route 62 under stop control with flashing beacon



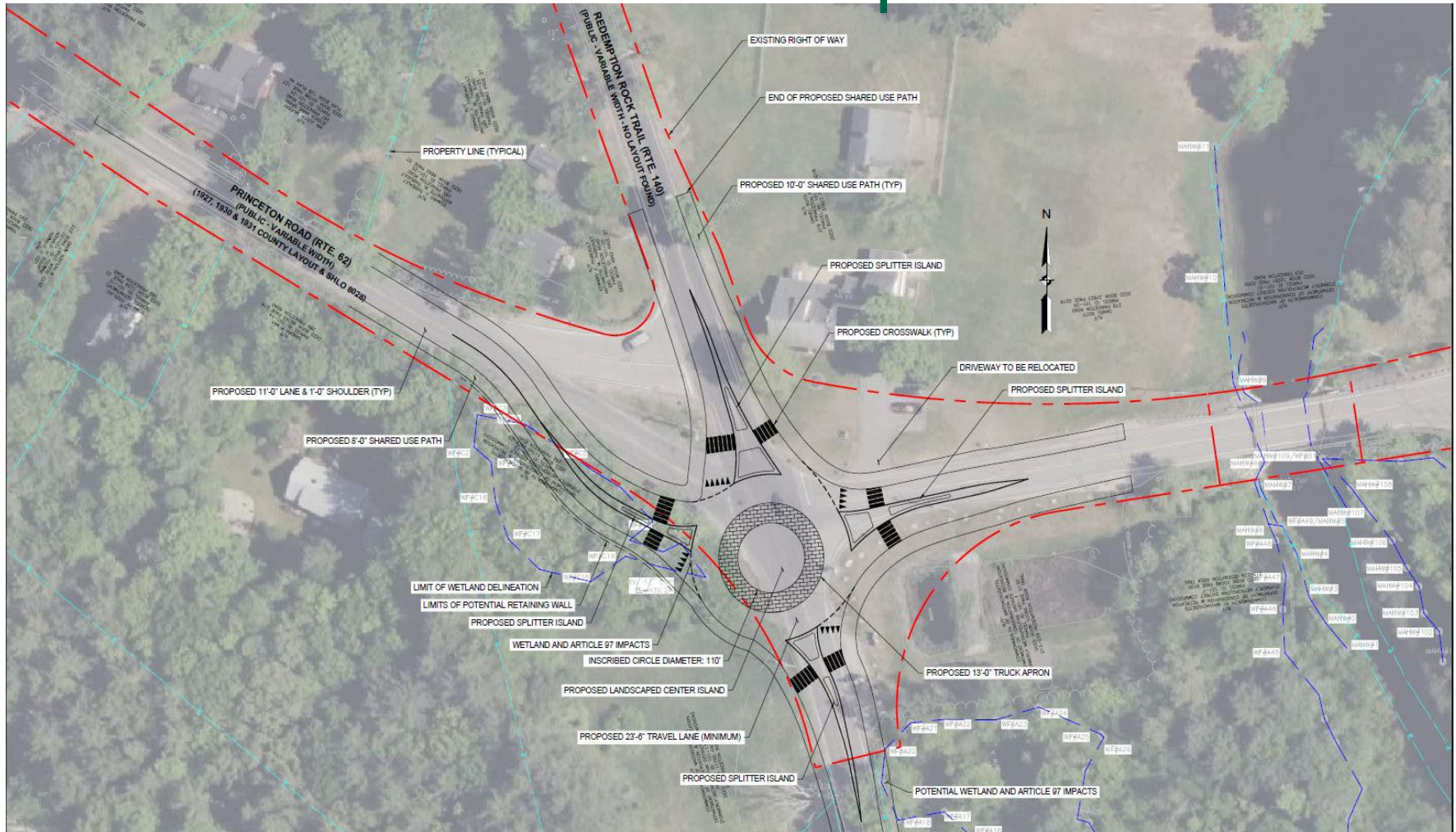
Evaluated Alternatives

- Two T'd Up Unsignalized Intersections
- Signalized Intersection
- Roundabout (Circular or Peanut)
- We are going through the formal MassDOT process to confirm with MassDOT that the roundabout will be the preferred option



Route 140 at Route 62 Intersection Improvements Project Town of Sterling

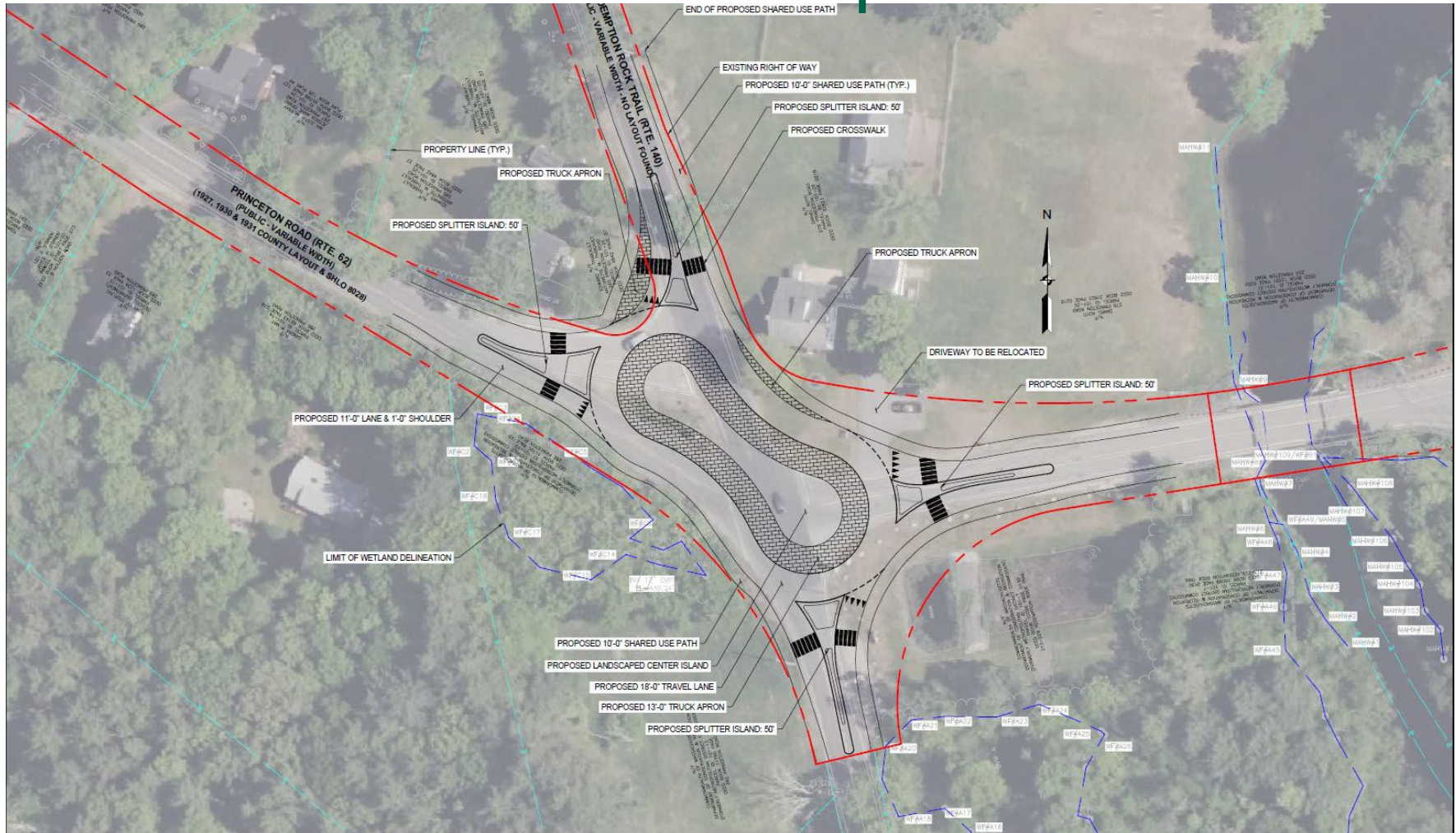
Circular Roundabout Option





Route 140 at Route 62 Intersection Improvements Project Town of Sterling

Peanut Roundabout Option





Preferred Alternative

- Peanut roundabout is the preferred alternative
- Discussed with MassDOT and the Town
- Fewer impacts (wetland, Article 97, ROW) than the circular roundabout
- Greater deflection to slow vehicles
- Fits better within the existing ROW

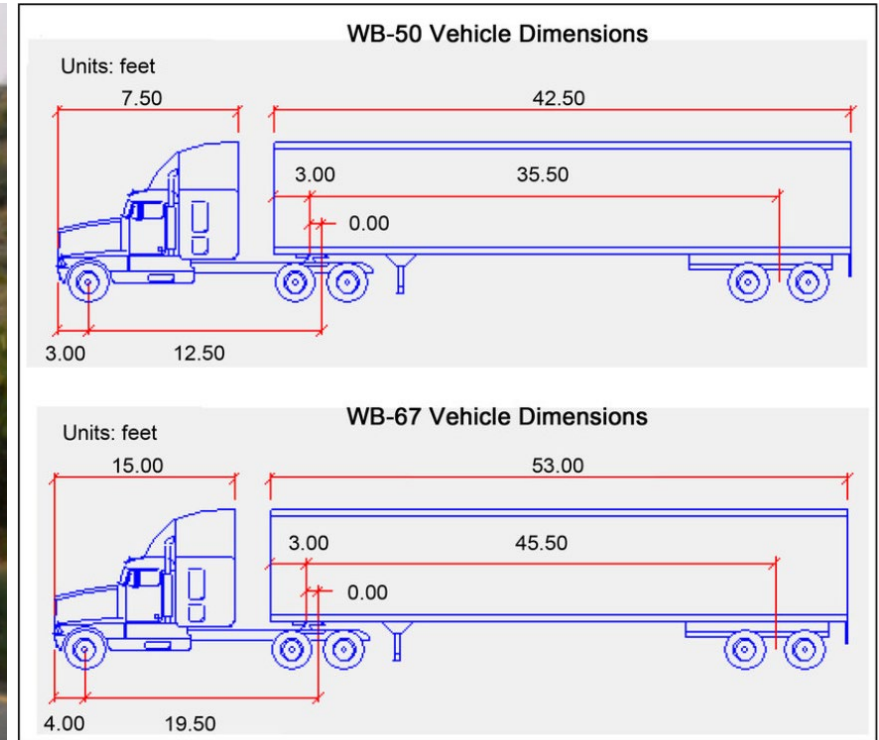


Proposed Conditions

- Peanut roundabout with 18' lanes
- Truck aprons to accommodate truck turning movements
- 10' shared-use path for pedestrians and cyclists
- Crosswalks to navigate around roundabout



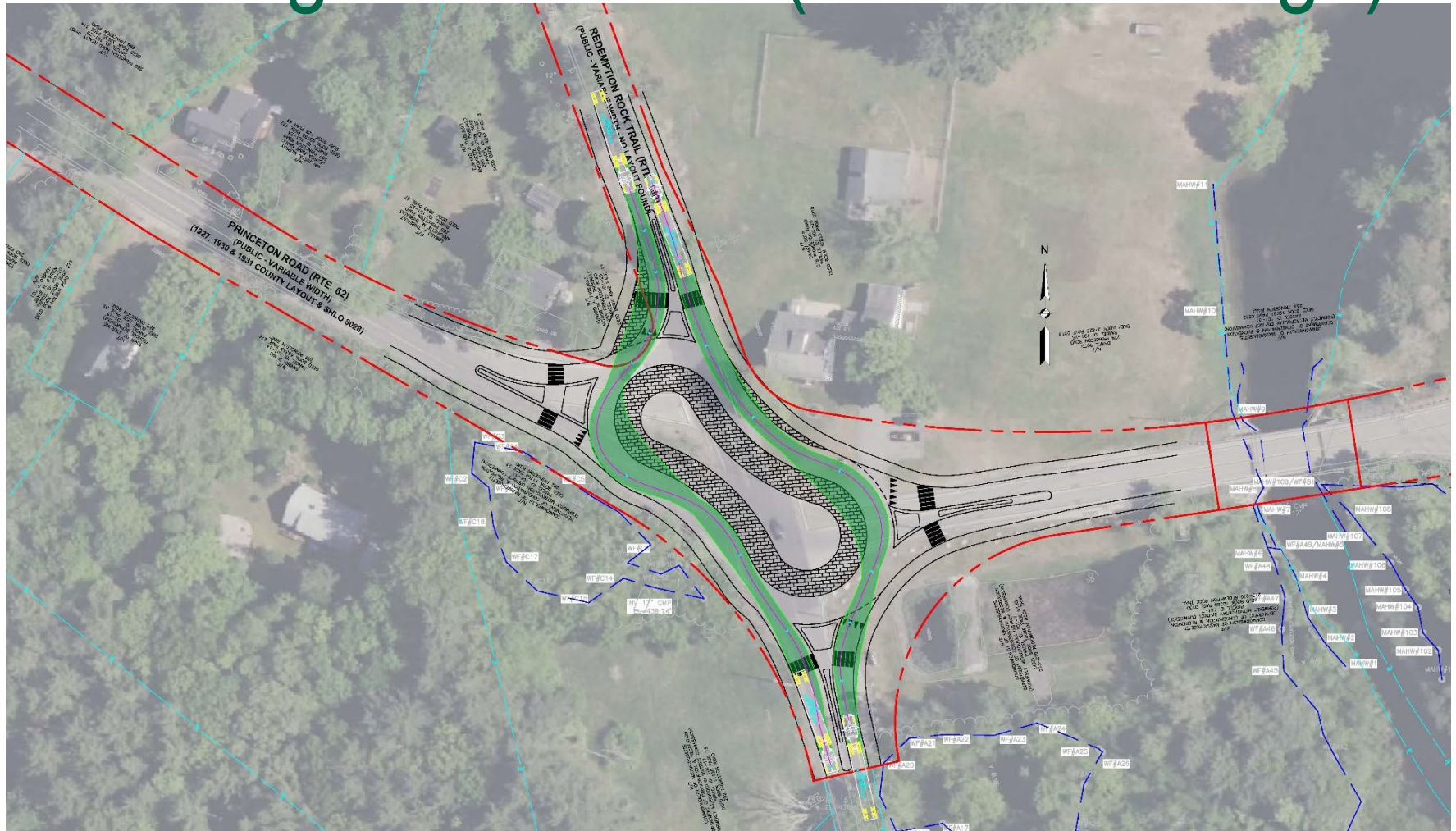
Turning Movements

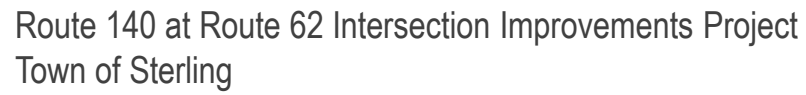




Route 140 at Route 62 Intersection Improvements Project Town of Sterling

Turning Movements (WB-67 Through)





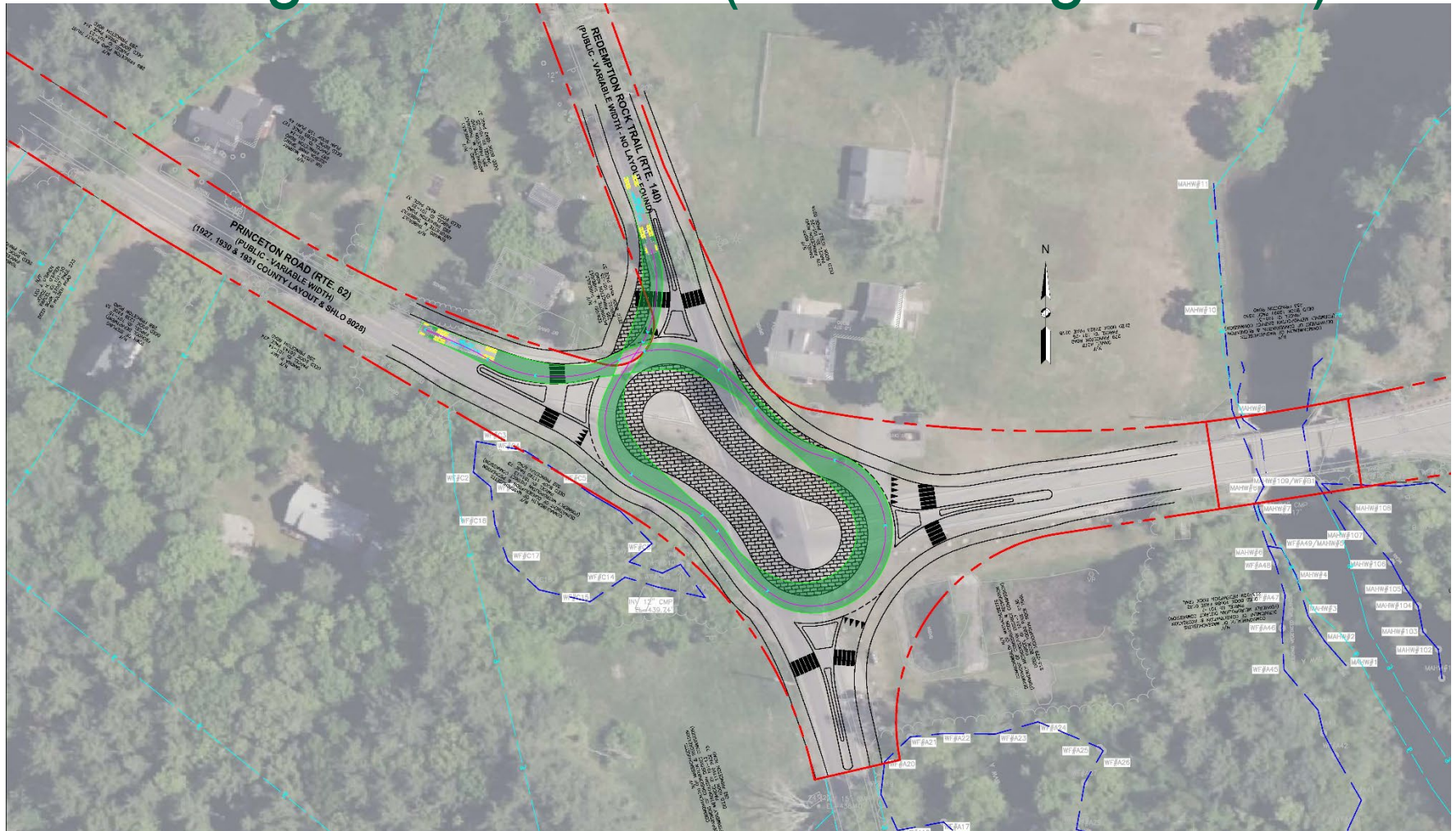
Turning Movements (WB-67 U-Turn)





Route 140 at Route 62 Intersection Improvements Project Town of Sterling

Turning Movements (WB-50 Right Turn)





Route 140 at Route 62 Intersection Improvements Project Town of Sterling

Turning Movements (WB-50 Right Turn)





Route 140 at Route 62 Intersection Improvements Project Town of Sterling

Turning Movements (WB-50 Through)





Route 140 at Route 62 Intersection Improvements Project Town of Sterling

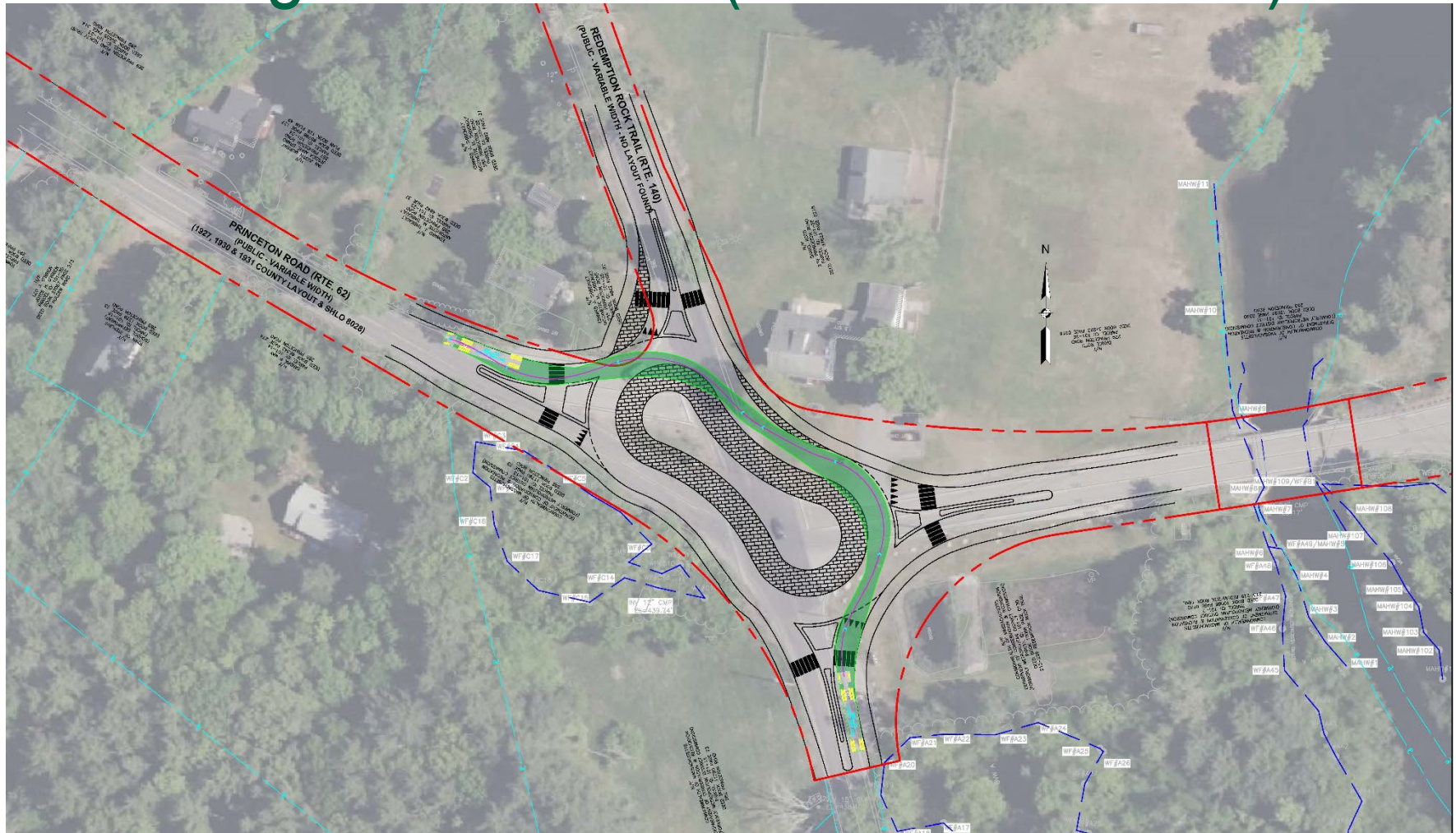
Turning Movements (WB-50 Left Turn)

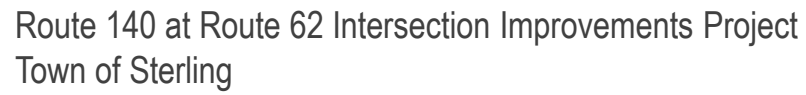




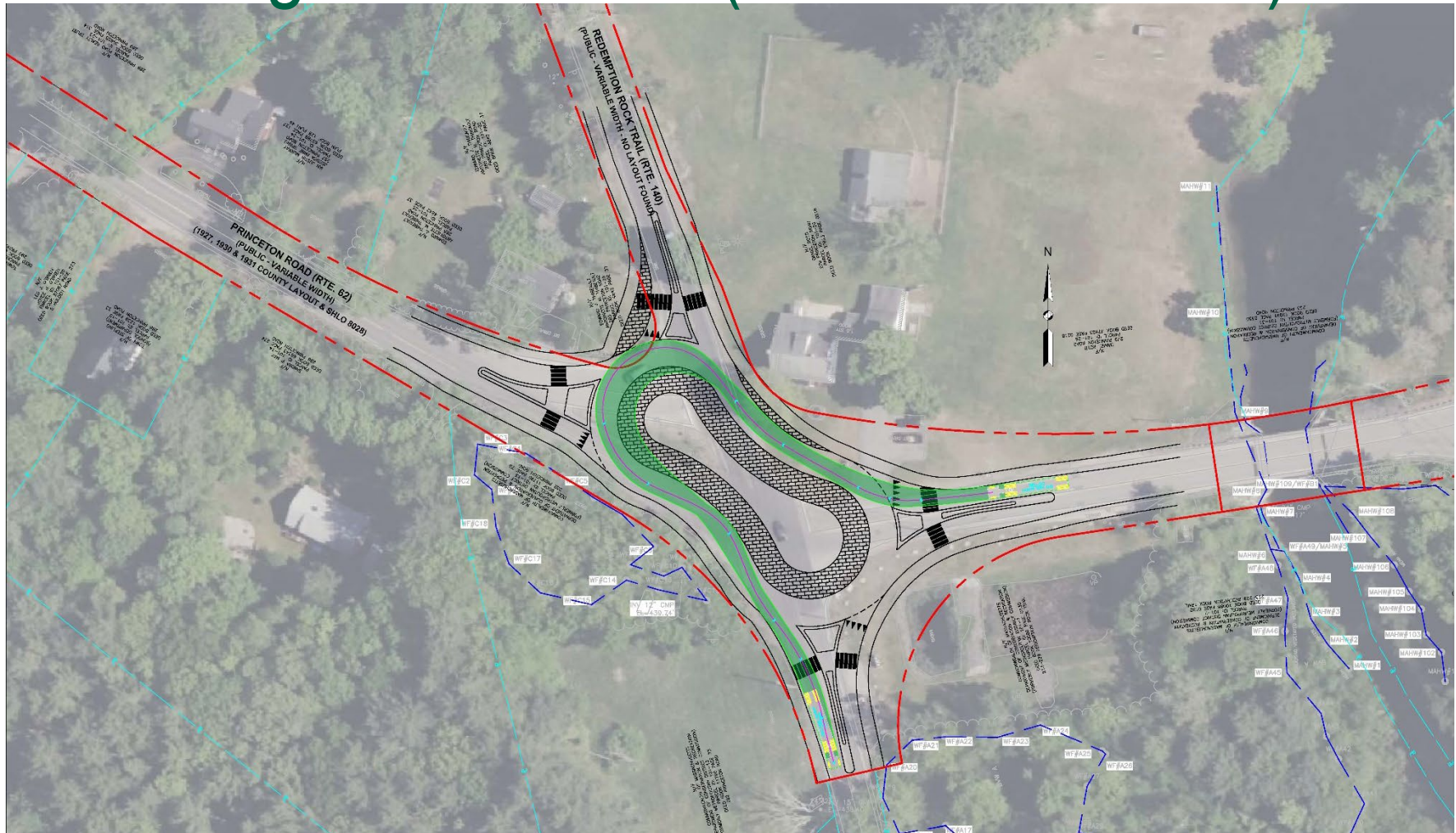
Route 140 at Route 62 Intersection Improvements Project Town of Sterling

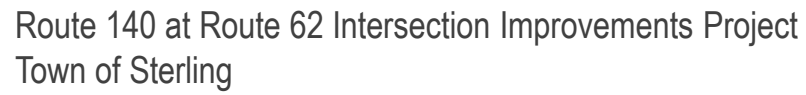
Turning Movements (WB-50 Left Turn)





Turning Movements (WB-50 Left Turn)





Turning Movements (WB-50 Left Turn)





Project Schedule

- 25% Design Submission – August 2023
- 75% Design Submission – March 2024
- 100% Design Submission – August 2024
- PS&E Design Submission – January 2025
- Advertisement Date – June 2025



Route 140 at Route 62 Intersection Improvements Project
Town of Sterling

Thank you!

