



Inadequate anchorage of Fire Escape



Inadequate anchorage of Railing



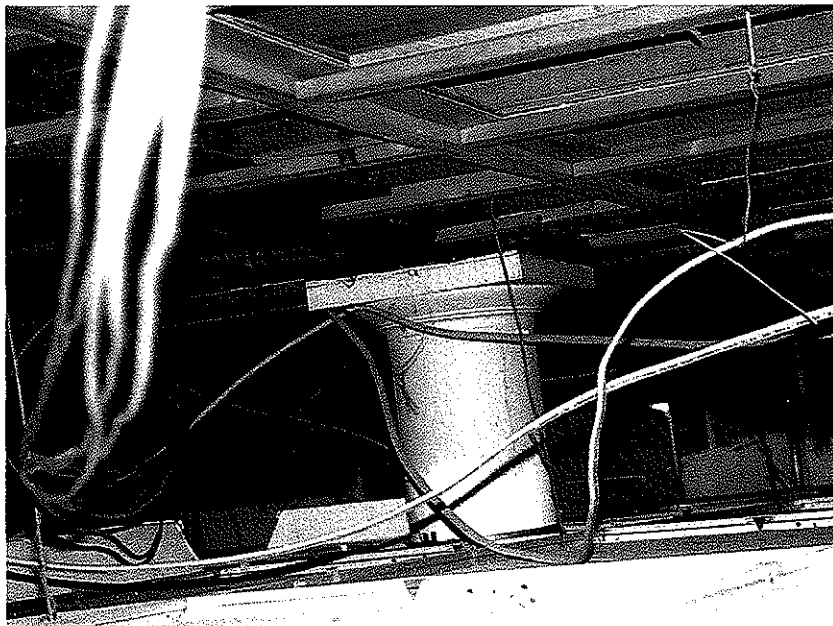
Right Side Brick Foundation



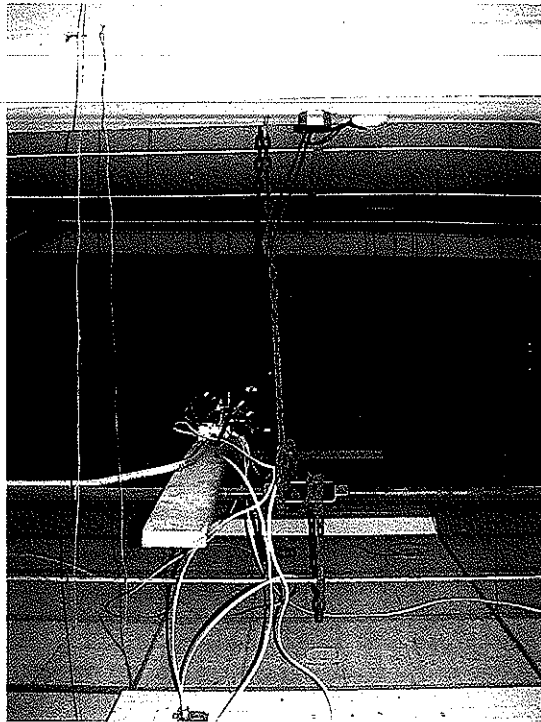
Right Side Building Elevation – Hump in Roof Ridge



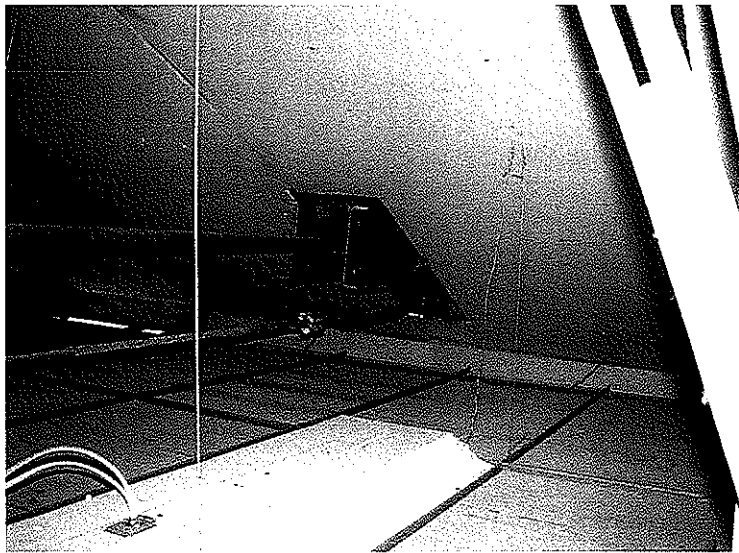
Interior brick wall requiring re-pointing



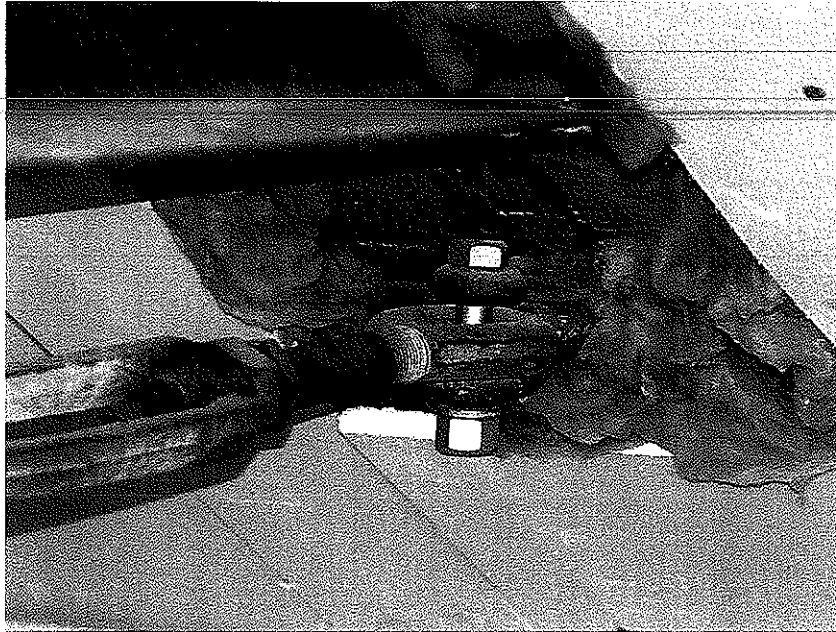
Second Floor Framing



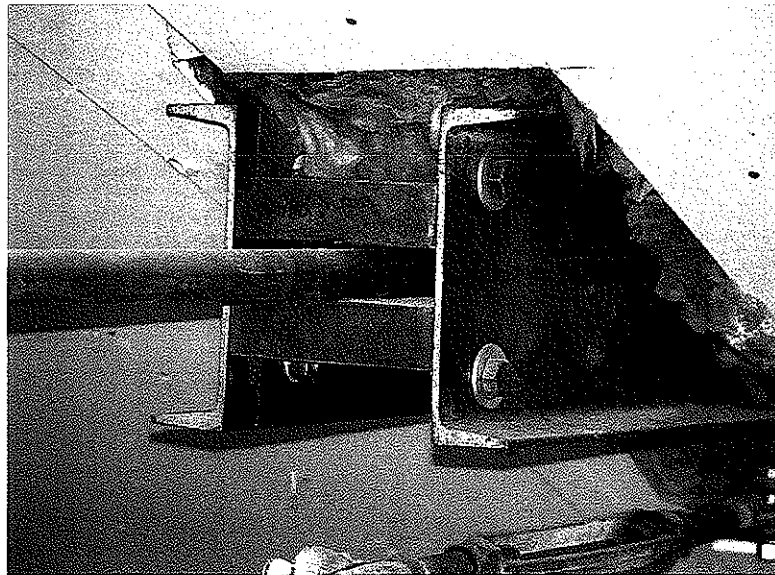
Tie Rod with Lower Cable



Tie Rod/Cable Connection Assembly



Cable Connection



Tie Rod Connection



Timber Construction



Timber Construction